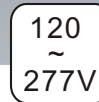
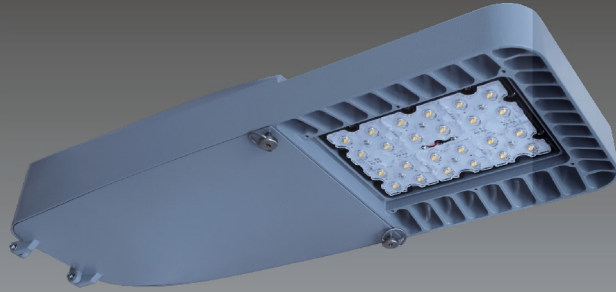


## Street Lighting

### YML-1SL41M Series

Models passed DLC listed:  
YML-1SL41M-40, YML-1SL41M-50,  
YML-1SL41M-60, YML-1SL41M-80

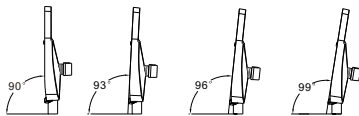
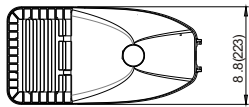
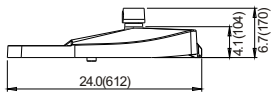


### Applications

Roadways, Freeways, Highways, Parking Lots, Off-streets Areas, etc.

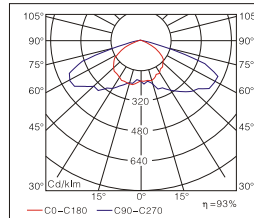
- Efficiency of chips: 150-165 lm/w, 180-195 lm/w
- LENS: Optical grade PC, anti-UV oxidation.
- Beam Angle: Type I, Type II, Type III
- Housing: die casting aluminum housing with excellent heat dissipation, surface treated with powder coated finish for corrosion and static resistance.
- Input voltage: 120-277 VAC, 277~480VAC, 50/60 HZ
- LED module can be dismantled separately for maintenance.
- LED driver: constant current, efficiency is up to 92%, PF ≥ 0.95.
- IP class: IP65

### Dimension [ Inch(mm) ]

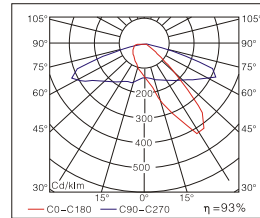


Adjustable Angles

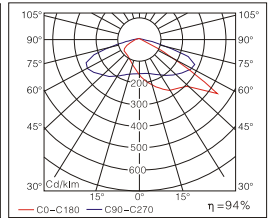
### Distribution Curve Flux



Type I



Type II



Type III

### Ordering Information

Example: YML-1SL41M-40-750-S-2-1

Company code	Voltage	Type	Power	Ra	Colour Temp.	Colour Options	Optic	Options
YML	1 120~277VAC	SL 41M	40 (40W 4950Lumens)	7	27	S	1 Type I 2 Type II 3 Type III	1 0~10V dimming 2 Timing dimming 3 Occupancy sensor (dimming control/ on off control) 4 Photocell 5 Wireless
			40P (40W 6200Lumens)	70	2700K	B		
	50 (50W 5850Lumens)		8	30	C			
	50P (50W 7500Lumens)		80	3000K				
	60 (60W 7500Lumens)		9	40	Coffee			
	60P (60W 9100Lumens)		90	4000K				
	80 (80W 9250Lumens)			50				
	80P (80W 11600Lumens)			5000K				
	277~480VAC			57				
	5 347~480VAC			65				
		6500K						